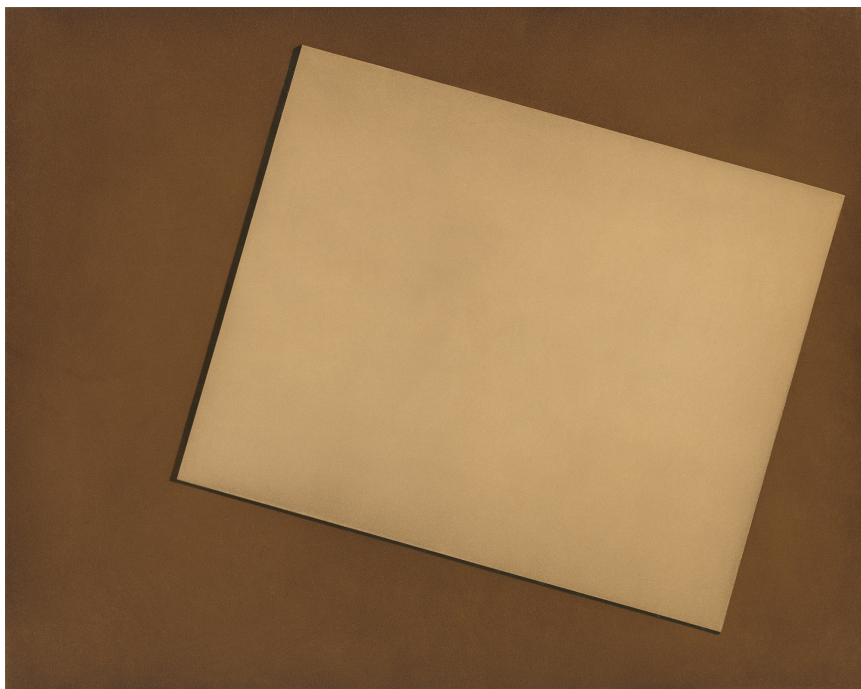
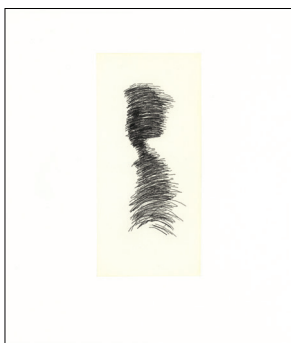
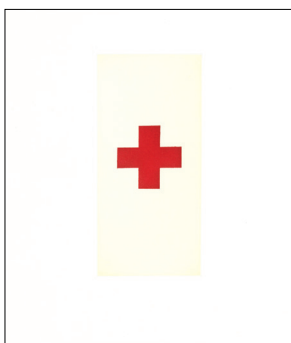
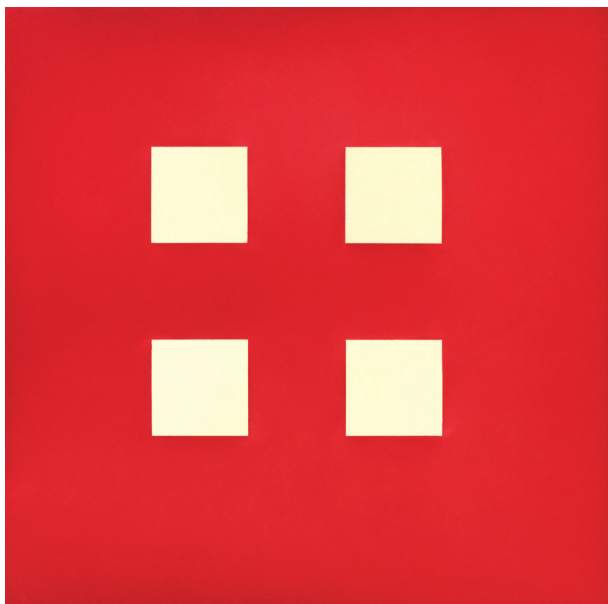


**TOM MARIONI**  
**NEW ETCHINGS**



Clockwise from top left: *4 Squares a Day*, aquatint printed in red and yellow; *Down to Earth*, color spit bite aquatint; *Miss Brown to You*, color aquatint; *Self Portrait*, soft ground etching with aquatint printed in yellow and black; *Arm Band*, aquatint printed in yellow and red. Each image printed by Courtney Sennish, 2023. Visit [crownpoint.com](http://crownpoint.com) for more details.

# Crown Point Press

20 Hawthorne Street  
San Francisco, CA 94105  
crownpoint.com / magical-secrets.com  
415.974.6273

PRESORTED  
FIRST-CLASS MAIL  
U.S. POSTAGE PAID  
SAN FRANCISCO, CA  
PERMIT NO. 925



Tom Marioni painting with acid on a copper plate.

**HARD EDGES FOR HARD TIMES**  
**New Etchings by Tom Marioni**  
  
**A BIG SHOW OF SMALL PRINTS**  
**A group exhibition of prints by 25 artists**  
  
**June 8 - September 1, 2023**

## **HARD EDGES FOR HARD TIMES**

by Tom Marioni

In the 1960s, there was a cultural revolution. Minimalism was the art of the time. It was based on hard-edge painting and sculpture. Today, in the 2020s, we are in another cultural revolution. Everyone is an artist, and hard edges are back.

### *Miss Brown to You*

is based on a painting by Kazimir Malevich called *Suprematist Composition: White on White* (1918) after the Russian Revolution. The painting is a cool white square on a warm white square, and suggests movement. My print is rectangular and is brown on brown. It represents, to me, Save the Earth.

### *Down to Earth*

is a landscape with five horizontal bands of color. Blue represents sky; red, pre-dawn; yellow, sunrise; green, spring; and brown, earth. The colors are on a warm cream background.

### *4 Squares a Day*

It is healthier to eat, at my age, four small meals a day than three large meals a day. The print is an illusionary trick. The cream squares dominate the deep red background and, with more time looking, the red cross appears between the squares.

### *Arm Band*

can be worn on the arm for healing others.

### *Self Portrait*

An out-of-body drawing of my shadow is reduced and redrawn in small scale as a signature for the new prints.